

Poverty & Equity Data Portal

[About](#) [Useful Links](#)

About the Portal :

The Poverty and Equity Data Portal is the World Bank Group's comprehensive source for the latest data on poverty, inequality, and shared prosperity. The portal allows you to explore several poverty and inequality indicators for countries and regions as well as explore countries by various income levels – low income, lower middle income, and upper middle income, and access poverty and inequality data for fragile, IDA and other country groupings.

Global Poverty Indicators

Poverty headcount ratio at \$1.90 a day % of population

35.3% 1990 10.7% 2013

Number of poor at \$1.90 a day (2011 PPP)

1.8670 billion 1990 769 million 2013

 Source: [PovcalNet](#)

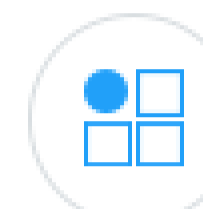
Notes:

International Poverty Line has a value of US\$1.90 PPP
 Lower Middle Income Class Poverty Line has a value of US\$3.20 PPP
 Upper Middle Income Class Poverty Line has a value of US\$5.50 PPP

Explore Poverty and Equity Data by :



OR



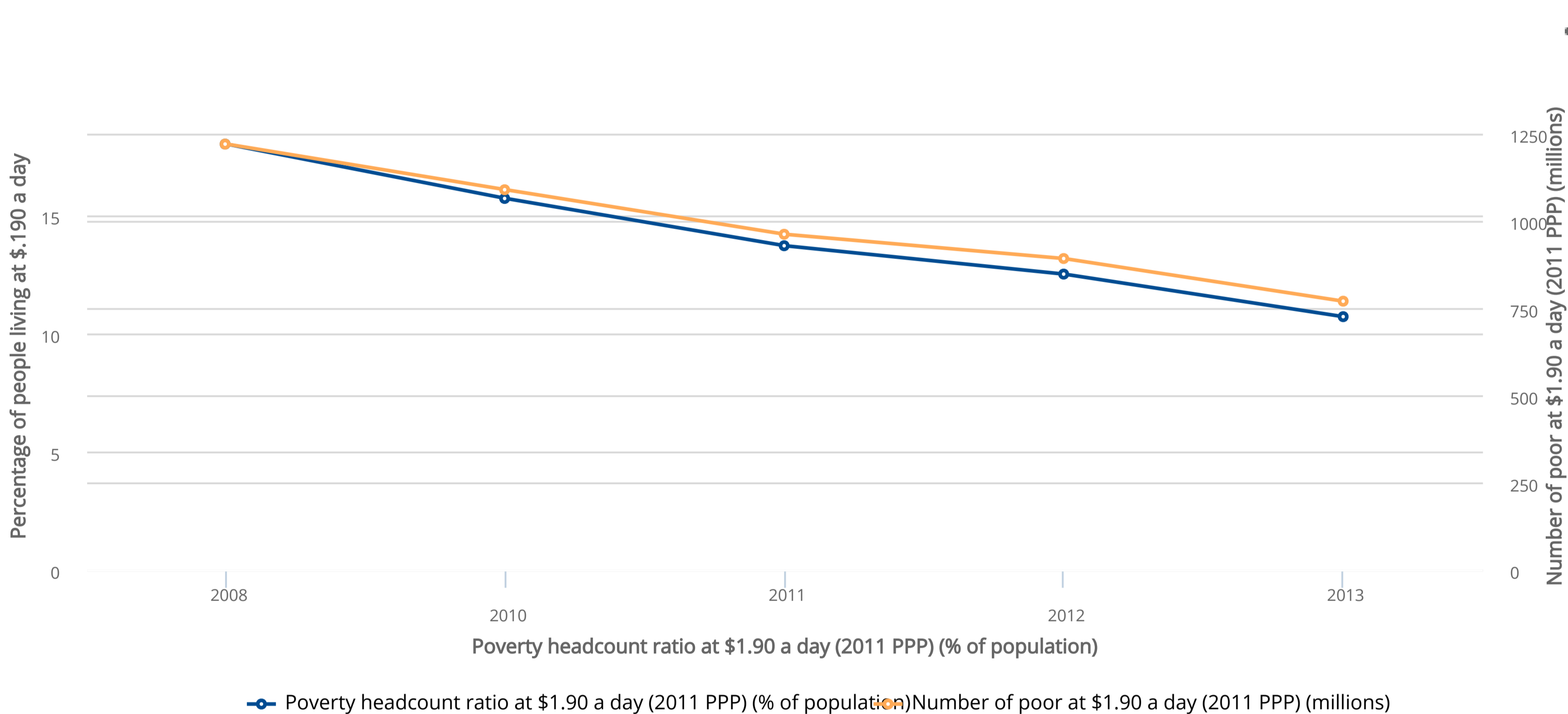
OR



Explore more data :

[PovcalNet](#)
[DataBank](#)
[Microdata library](#)
[Poverty](#)
[Shared Prosperity](#)
[Inequality](#)

Global Poverty Headcount Ratio at International Poverty Line


 Source: [Poverty & Equity Databank](#) and [PovcalNet](#)

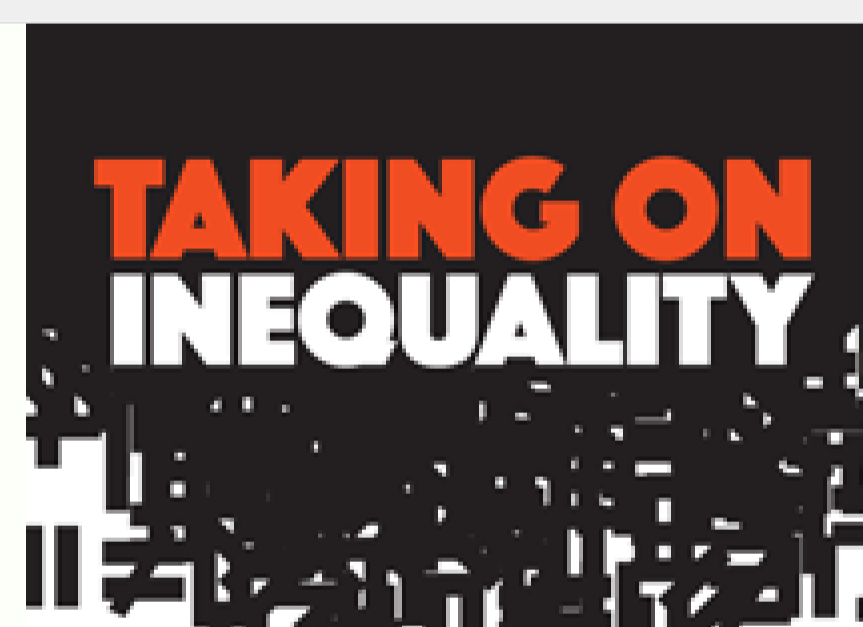

World Bank and Poverty

Get the latest news, research, and information about the World Bank's work on eradicating extreme poverty



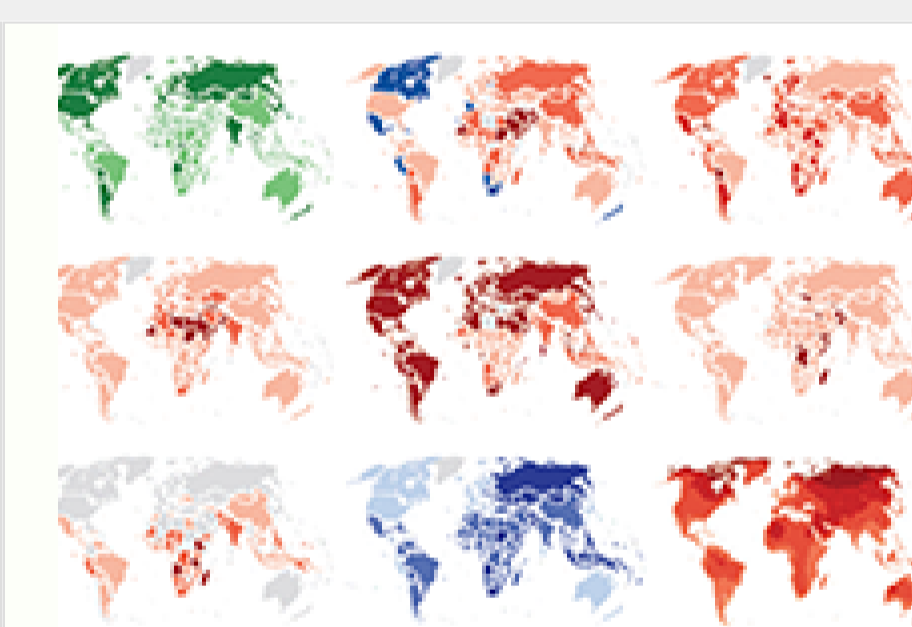
How do we measure poverty

Learn more about how the World Bank measures poverty



Poverty and Shared Prosperity 2016

The report provides the latest and most accurate estimates on trends in global poverty



World Bank Data

Explore and access global development data

RESOURCES

Civil Society

Consultations

Government

[Client Connection](#)
[Parliamentarians](#)
[Access to Information](#)
[Financing & Risk Management](#)

Businesses

[Corporate Procurement](#)
[Operational Procurement](#)

Investors

[World Bank Bonds](#)

Job Seekers

Journalists

Students

ABOUT

History

Organization

Public Outreach

Events

Jobs

Annual Reports

World Bank Group Accountability

[Compliance Advisor Ombudsman](#)
[Grievance Redress Service](#)
[Independent Evaluation Group](#)
[Inspection Panel](#)
[Integrity Vice Presidency](#)

DATA

[DataBank](#)
[Data Catalog](#)
[Microdata](#)
[Data Publications & Products](#)
[APIs for Developers](#)

RESEARCH

[Search Research](#)
[Tools & Tables](#)

LEARNING

[Global Development Learning Network](#)
[Statistical Capacity Building](#)
[Scholarships & Fellowships](#)

NEWS

[Search News](#)
[Blogs](#)
[Multimedia](#)
[Media Briefing Center](#)
[Media Contacts](#)

PROJECTS & OPERATIONS

[Search Projects](#)
[Products & Services](#)
[Country Lending](#)
[Results](#)

PUBLICATIONS

[Documents & Reports](#)
[Archives](#)
[Libraries](#)

COUNTRIES

TOPICS

FOLLOW US



Newsletter



More ways to get to us

[Sign Up for Email Newsletters](#)
[World Bank Apps](#)
[World Bank Live](#)